



If you can, please help support our community in Pasadena/Altadena

JPL/Caltech Relief Fund



IPAC Relief Fund



Advancing the Roman Coronagraph Instrument to Flight: Project Status and Coronagraph Community Participation Program Activities

◆—————◆
AAS 245 Winter 2025
Tuesday Jan. 14, 10am-12pm

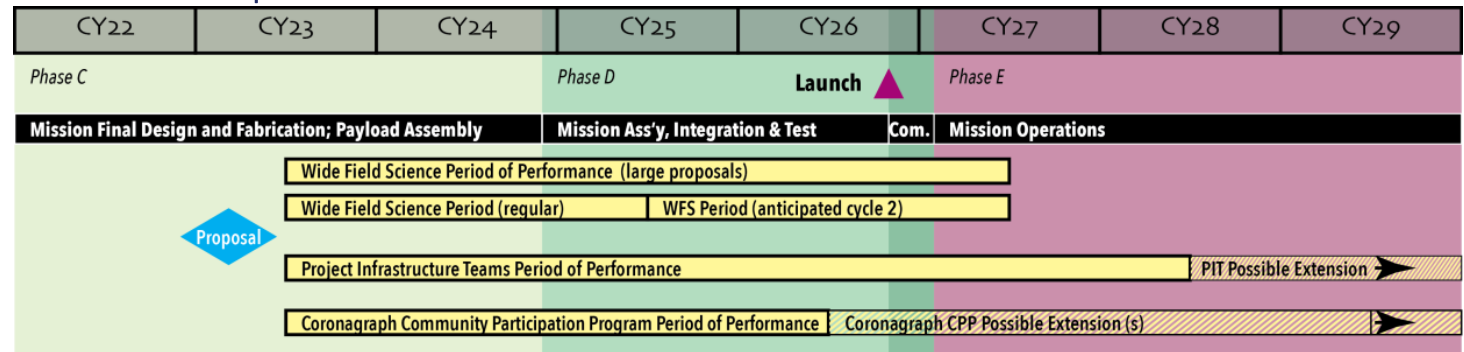




What is the CPP?

- Established by 2022 NASA ROSES Nancy Grace Roman Space Telescope Research and Support Participation Opportunities program element
- Solicited proposals aimed at supporting the progress of and exploiting the scientific and technical data from Roman
- CPP category limited to sole-PI/small-group proposals with intent to form a single, cohesive CPP Team composed of:

- Selected teams
- International partners
- Representatives from Coronagraph science and engineering teams
- Members of Science Support Center (SSC)

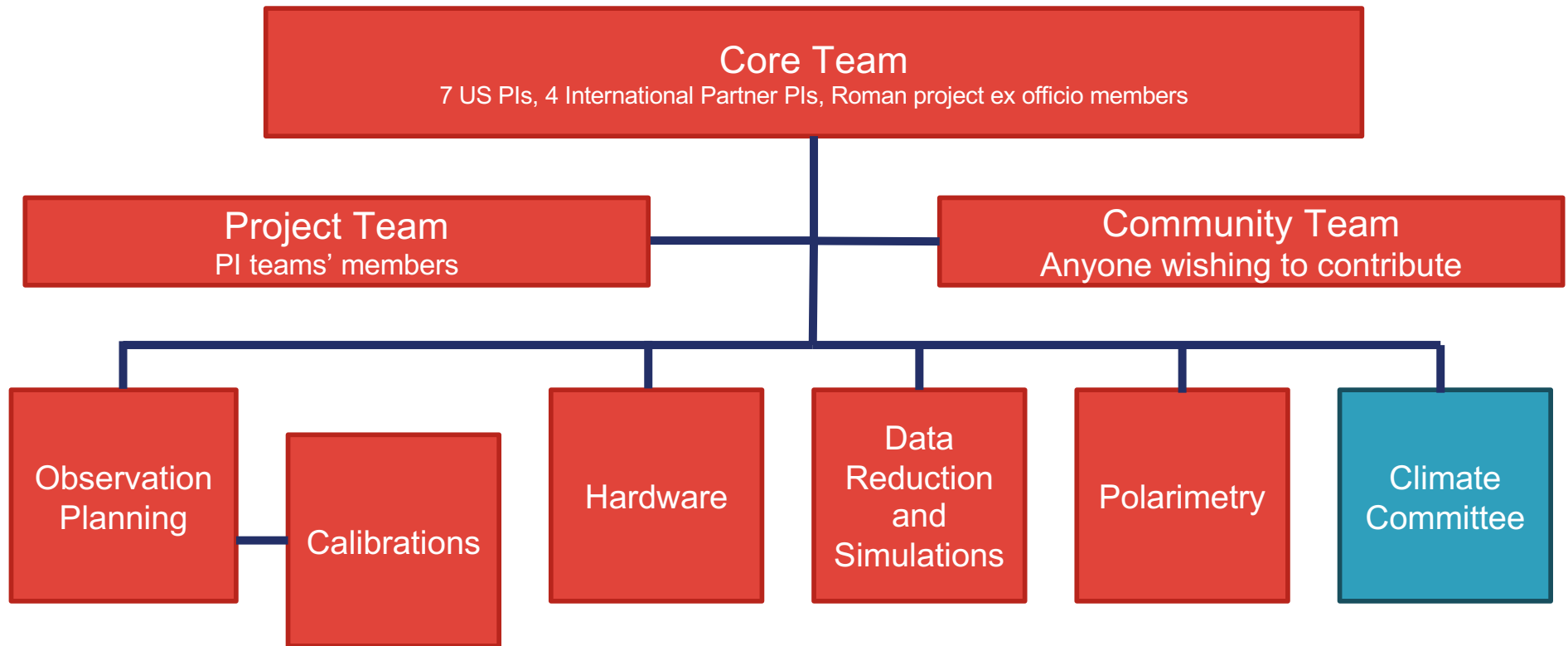




What are the CPP's top Priorities?

- To make the Roman Coronagraph Instrument as productive as possible
- Near-term high-priority tasks:
 - Development of coronagraph instrument data reduction pipeline (DRP)
 - Development of target and reference star database
 - Vetting programs for reference stars
 - Finalization of instrument calibrations
 - Development of observation scheduling tools
 - Simulating *everything*
- Next: Preparing for beyond-requirements observations

CPP Organization

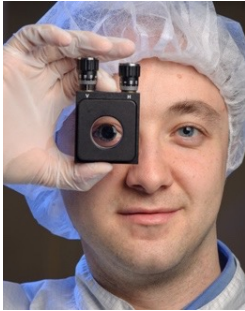




Who's leading the CPP?



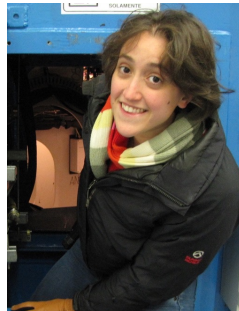
Vanessa Bailey, *JPL*
CPP Chair
Roman Coronagraph
Instrument Technologist



Rus Belikov
Ames



Beth Biller
ESA



Alexandra Greenbaum
Caltech/IPAC
SSC



Oliver Krause
MPIA



Bertrand Mennesson
JPL Roman Deputy
Project Scientist



Max Millar-Blanchaer
UCSB
DRP & Sims WG co-lead



Naoshi Murakami
JAXA



Laurent Pueyo
STScI



Jason Rhodes
JPL Roman Project Scientist



Ty Robinson
U. Arizona



Dmitry Savransky, *Cornell*
Inaugural CPP co-chair



Arthur Vigan
CNES



Jason Wang
Northwestern
DRP & Sims WG co-lead



Schuyler Wolff
U. Arizona
Obs WG lead



Neil Zimmerman, *GSFC*
Roman Project
Coronagraph Scientist



Who's Actually Doing the Work?

Ramya Anche (UARizona)
Ewan Douglas (UARizona)
Jessica Gersh-Range (Princeton)
Satoshi Itoh (Nagoya Univ.)
Bruce Macintosh (UC Observatories)
Jun Nishikawa (NAOJ)
Frans Snik (Leiden University)
Takahiro Sumi (Osaka Univ.)
Taichi Uyama (Cal State U. Northridge)
Michele Woodland (GSFC)
Hibiki Yama (Osaka Univ.)
Hanying Zhou (JPL)
Oscar Carrion-Gonzalez (LESIA)
John Debes (STScI)
David Doelman (SRON)
Markus Feldt (MPIA)
Hajime Kawahara (ISAS/JAXA)
John Livingston (ABC/NAOJ)
Axel Potier (Bern)
Matthias Samland (MPIA)
Aoi Takahashi (ABC/NAOJ)
Pierre Baudoz (LESIA)
N. Jeremy Kasdin (Princeton)
Jürgen Schreiber (MPIA)
Lisa Altinier (LAM)
Eduardo Bendek (JPL)

Ellis Bogat (UMaryland)
Robert De Rosa (ESO (Chile))
Motohide Tamura (UTokyo/ABC)
Jorge Llop Sayson (JPL)
Tsutsumi Nagai (Osaka Univ.)
Masataka Aizawa (Riken)
Yui Kawashima (ISAS/JAXA)
Kenta Yoneta (NAOJ)
Benjamin Charnay (LESIA)
Malachi Noel (Northwestern)
Justin Hom (UARizona)
Samantha Hasler (MIT)
Patrick Lowrance (IPAC)
Lee Armus (IPAC)
Zhexing Li (UCR)
Stephen Kane (UCR)
Toru Yamada (ISAS, JAXA)
Masayuki Kuzuhara (NINS Astrobiology Center)
Emmanuel Joliet (Caltech / IPAC)
Eric Mamajek (JPL)
Susan Redmond (Caltech / JPL)
Nick Schragal (University of Arizona)
Alexis Lau (LAM)
Leonid Pogorelyuk (RPI)
Toshiyuki Mizuki (ABC/NAOJ)
Marah Brinjikji (ASU)

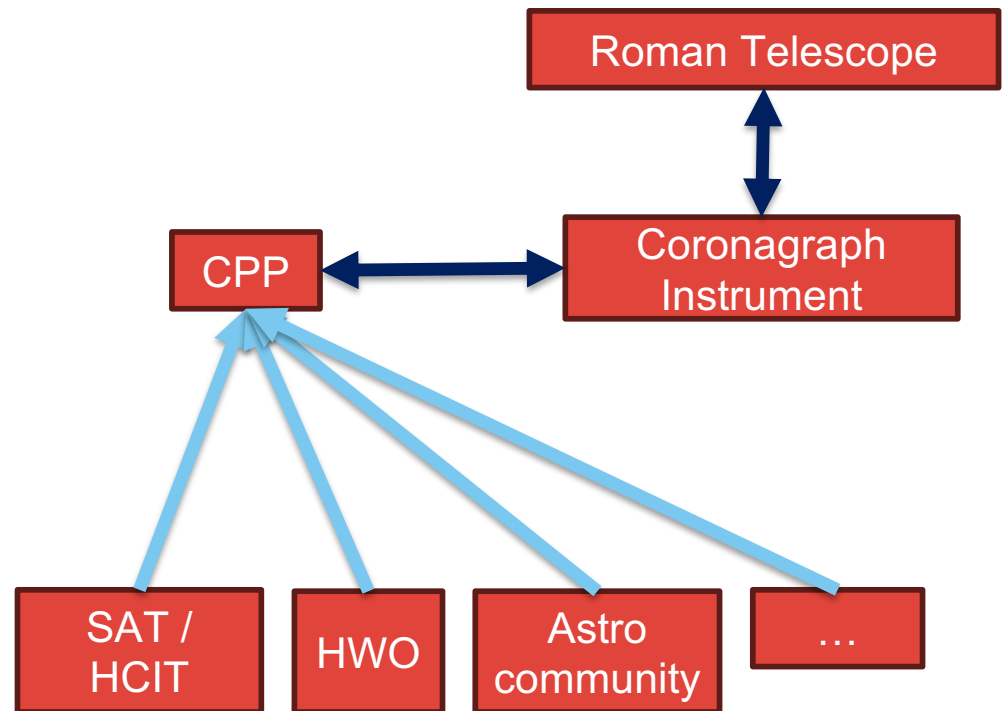
Sarah Blunt (Northwestern)
Elodie Choquet (LAM)
Julien Girard (STScI)
Sergi Hildebrant Rafels (JPL)
John Krist (JPL)
Sarah Moran (UARizona)
Karl Stapelfeldt (JPL)
Marie Ygouf (JPL)
Robert Zellem (JPL)
Mark Marley (UARizona)
Remi Soummer (STScI)
Tyler Groff (GSFC)
Bijan Nematı (Tellus1)
Cynthia Wong (JPL)
Kevin Ludwick (U. Alabama-Huntsville)
Tim Koch (JPL)
Jennifer Sobeck (IPAC)
James Ingalls (IPAC)
Amanda Chavez (Northwestern)
Zarah Brown (UARizona)
Gaël Chauvin (OCA)
Dan Sirbu (Ames)
Wolfgang Brandner (MPIA)
Shota Miyazaki (ISAS/JAXA)
Emiel Por (STScI)
Johan Mazoyer (LESIA)

CPP is the conduit for community input



Planned efforts to solicit input:

- Early 2025:
 - Coronagraph Primer and Community Interest Survey
 - < 15min time commitment
 - high-level ranking of priorities
 - Very brief ideas for tests or targets
- Mid 2025: CPP issues call for whitepapers to flesh out specific concepts
 - once supporting tools are available



Agenda



10:00	Opening Remarks	Max Millar-Blanchaer
10:10	Instrument Performance and Status WG	Dmitry Savransky
10:25	DRP & Simulations WG	Max Millar-Blanchaer
10:45	Observation Planning WG	Schuyler Wolff
11:00	Reference Star Vetting	Justin Hom (Remote)
11:15	Hardware Working Group	Dan Sirbu
11:25	Community Survey	Schuyler Wolff
11:35	ROSES Call	Dominic Benford
11:45	Open Discussion	